



Emergency Services Personnel Network

Background Studies



SAPOL Interview



MFS Interview



Emergency Services Annual Reports



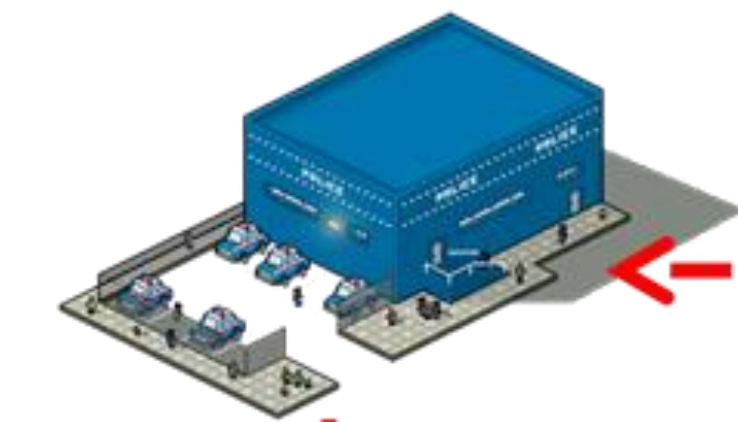
Accelerometer Research



Google Maps™ Research



Headquarters



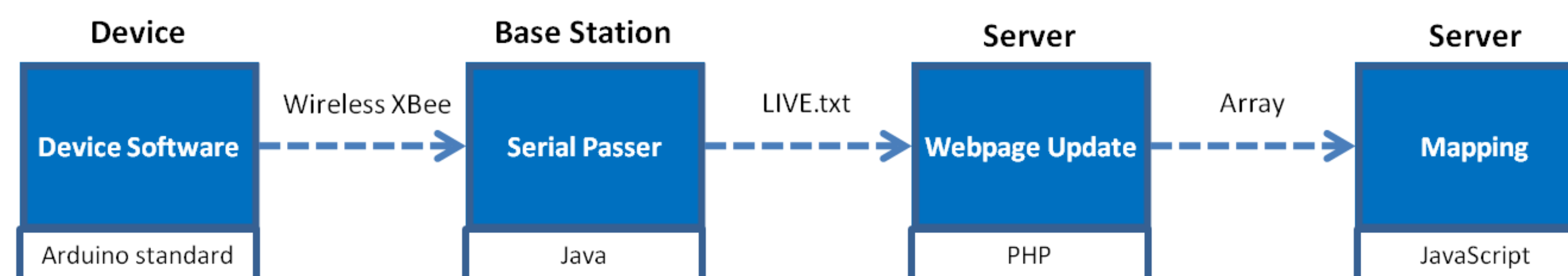
Base Station



OBJECTIVES

To design a device for emergency service personnel which:

- Utilises GPS technology
- Utilises Accelerometer data
- Communicates back to a server in order to update a map in real time
- Incorporates a panic button
- Fits comfortably on the body



PROJECT EXTENSIONS

- Incorporated user health records
- Server tracks multiple devices

PROJECT SIGNIFICANCE

- Connects people in need to assistance faster
- Has the potential to save lives
- Improves coordination of emergency services

SCHOOL OF
ELECTRICAL AND
ELECTRONIC ENGINEERING

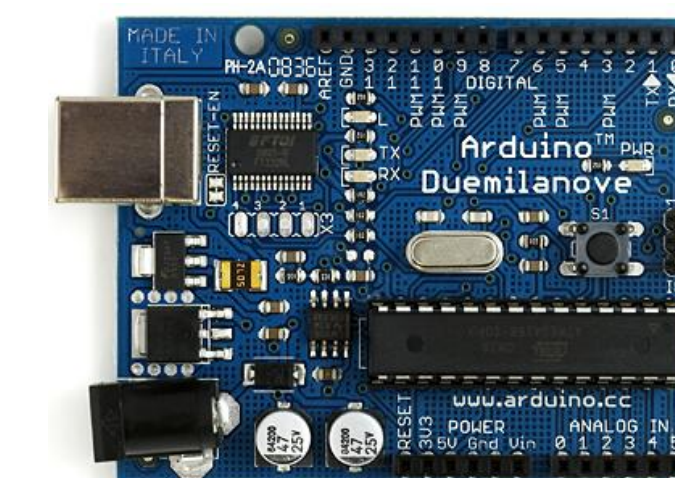


THE UNIVERSITY
of ADELAIDE

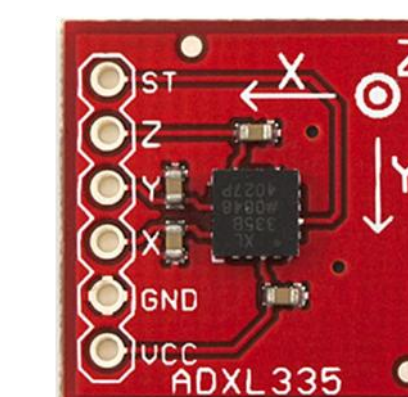
Inside the ESPN device



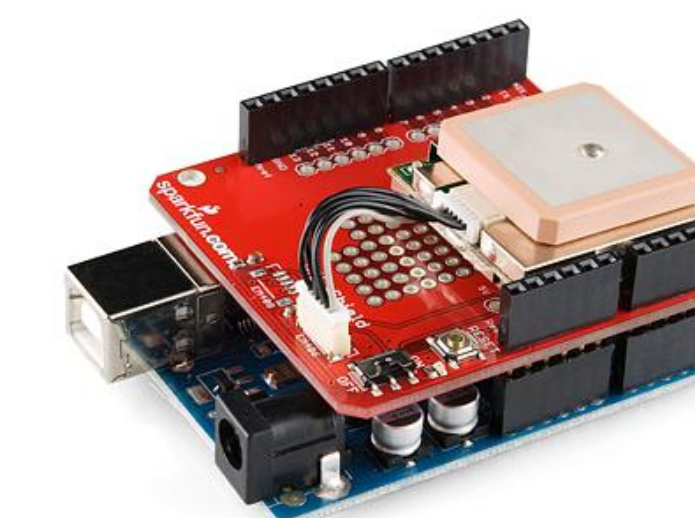
Processor



Accelerometer



GPS Receiver



Wireless Transmitter

